

Stateful Push implementation in Java

The logo for ndw, consisting of the lowercase letters 'ndw' in a bold, black, sans-serif font. The text is centered within a white rectangular box. A thick orange horizontal line is positioned below the text, extending across the width of the box.

ndw

Martin van Ekelenburg / Rob van de Werken

26 May 2021

VM-IVRA project

- VM-IVRA: Traffic Management – Information for Routing Advice
- Part of Data Top 15 in the Digitization of the Government program
- Collaboration with Service Providers and other projects, like Socrates2.0, SmartWayz, Talking Logistics among others

DATEX II

ndw



VM-IVRA Data

- Data:
 - Environmental zones / Delivery times
 - Avoidance of given places / Alternative routing
 - Rule Scenarios
- Tooling:
 - Map based tooling
 - Digitization of rule scenario books

DATEX II

ndw



VM-IVRA / DRS Goals

- Win for Road Authority, Service Provider, Road user and Society
 - Network optimization
 - Improved and clear data delivery
 - Better, more accurate Traffic Information and alternative routing
 - Traffic follows socially desirable routes
- Data:
 - Environmental zones / Delivery times
 - Avoidance of given places / Alternative routing / Rule Scenarios

DATEX II

ndw



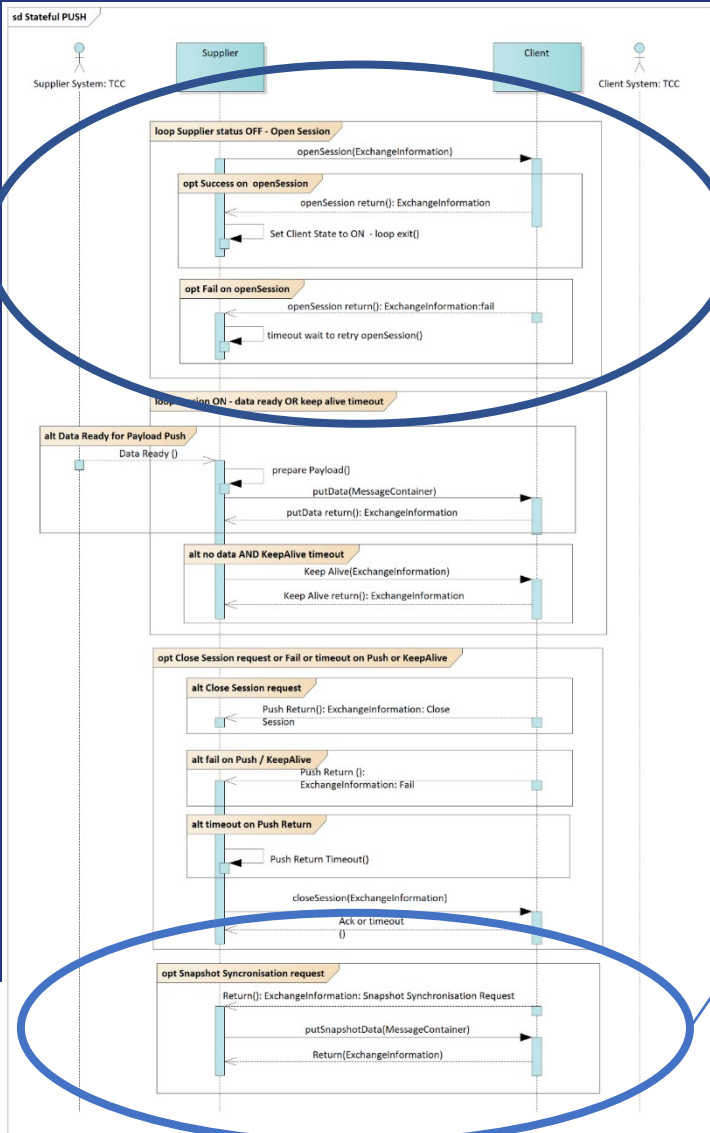
DATEX II v3.x and Exchange 2020

- Administration
- Start Connection and Deliver Data
- Maintain Connection
- Close Connection or Fail
- Request Snapshot
- Data Refusal

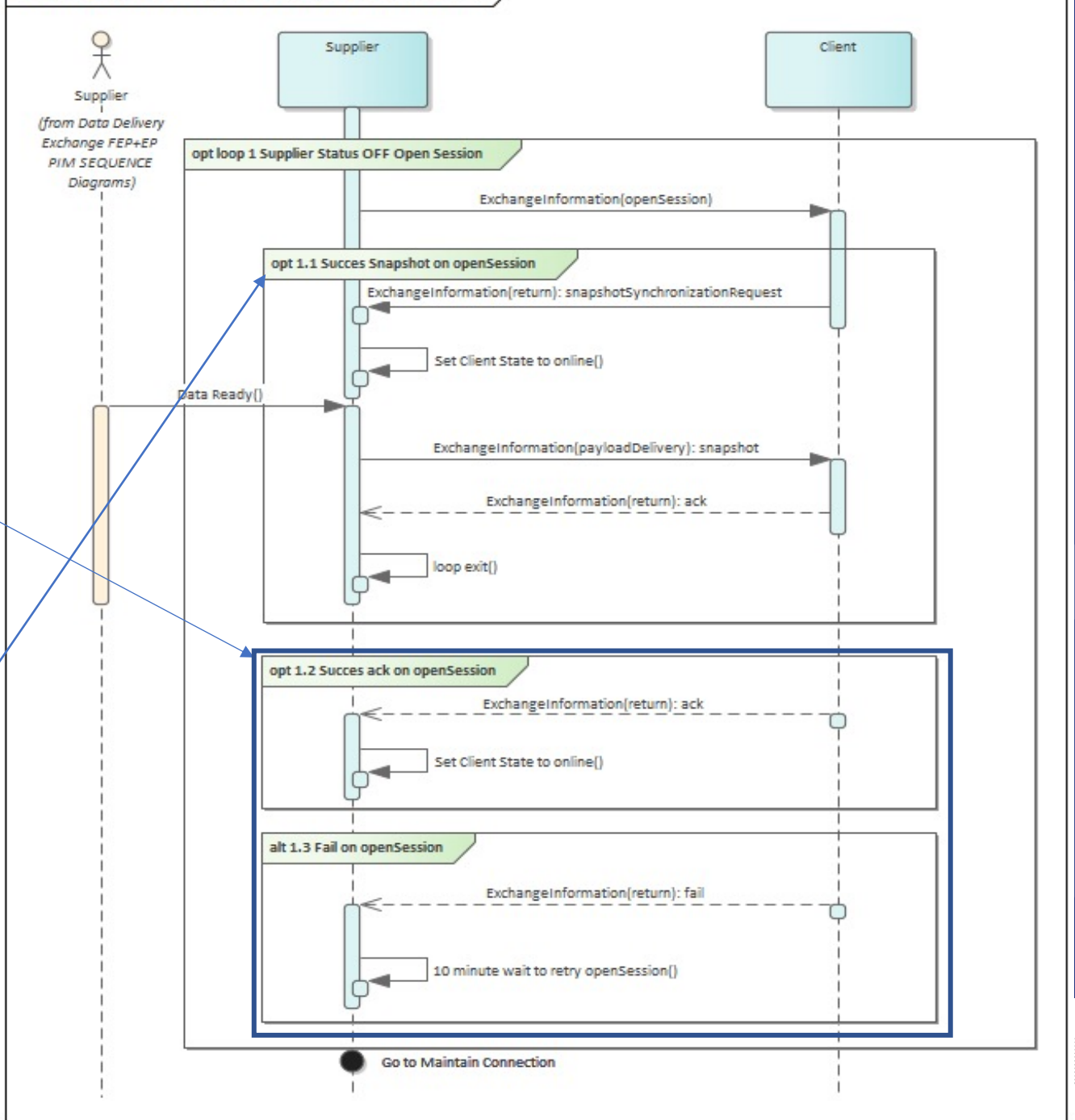
- Situation publication / Exchange profiles

DATEX II

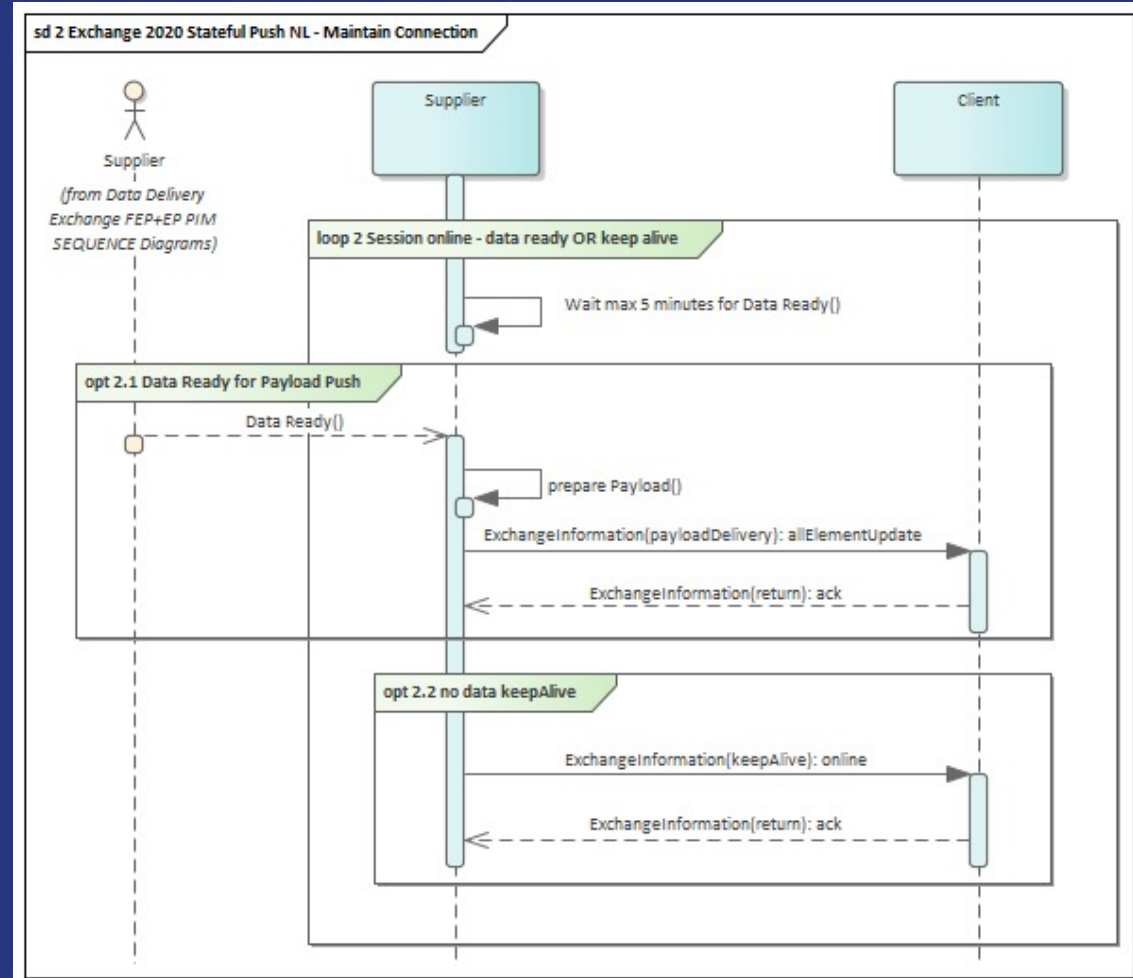
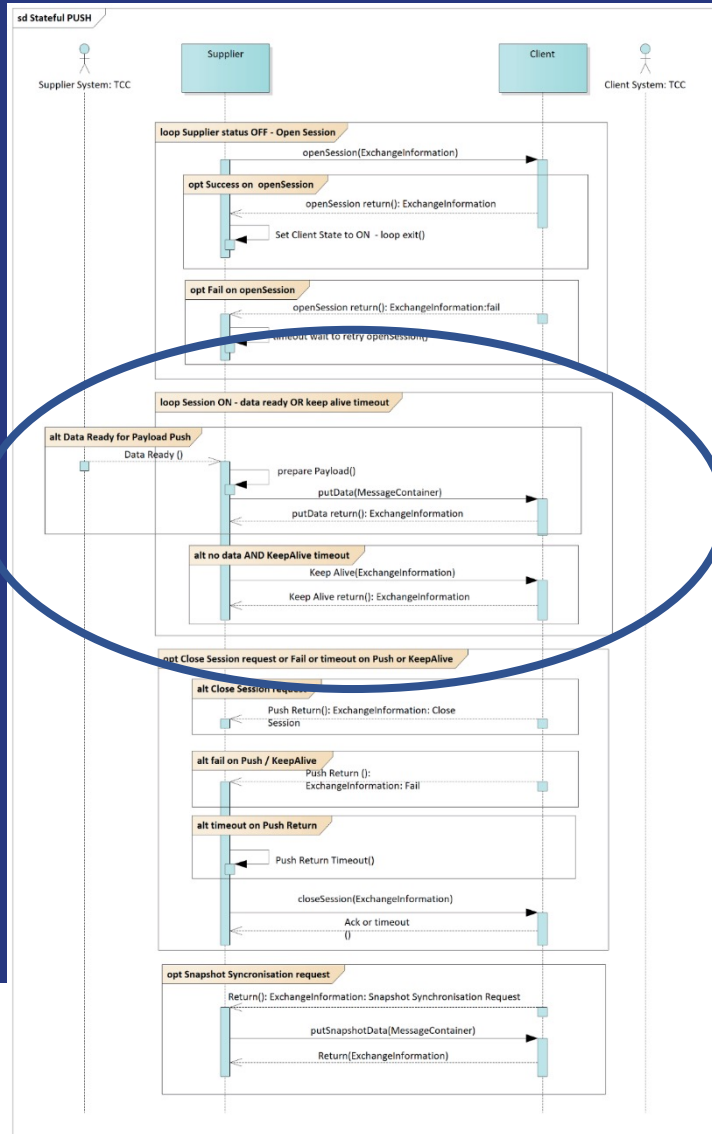
Start Connection



sd 1 Exchange 2020 Stateful Push NL - Start Connection and Deliver Data



Maintain Connection

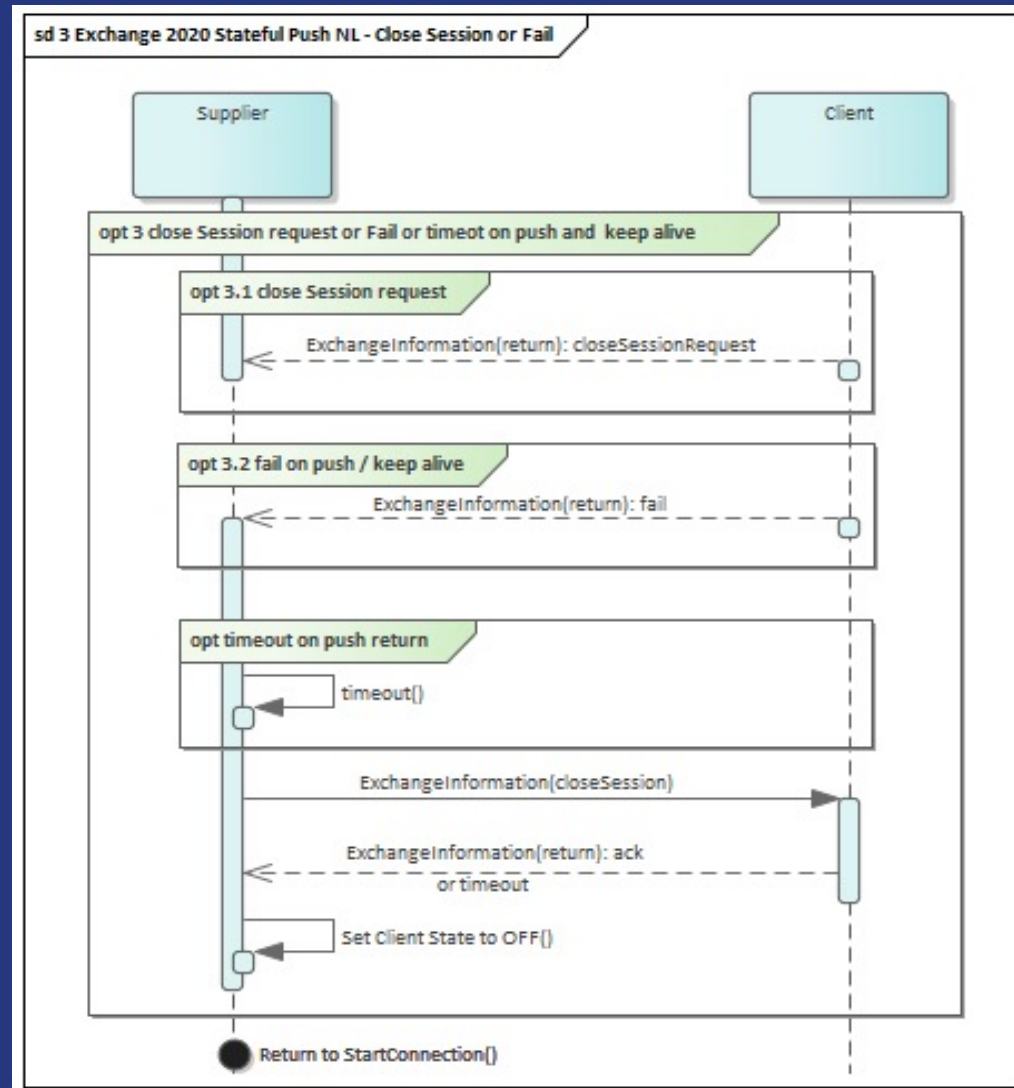
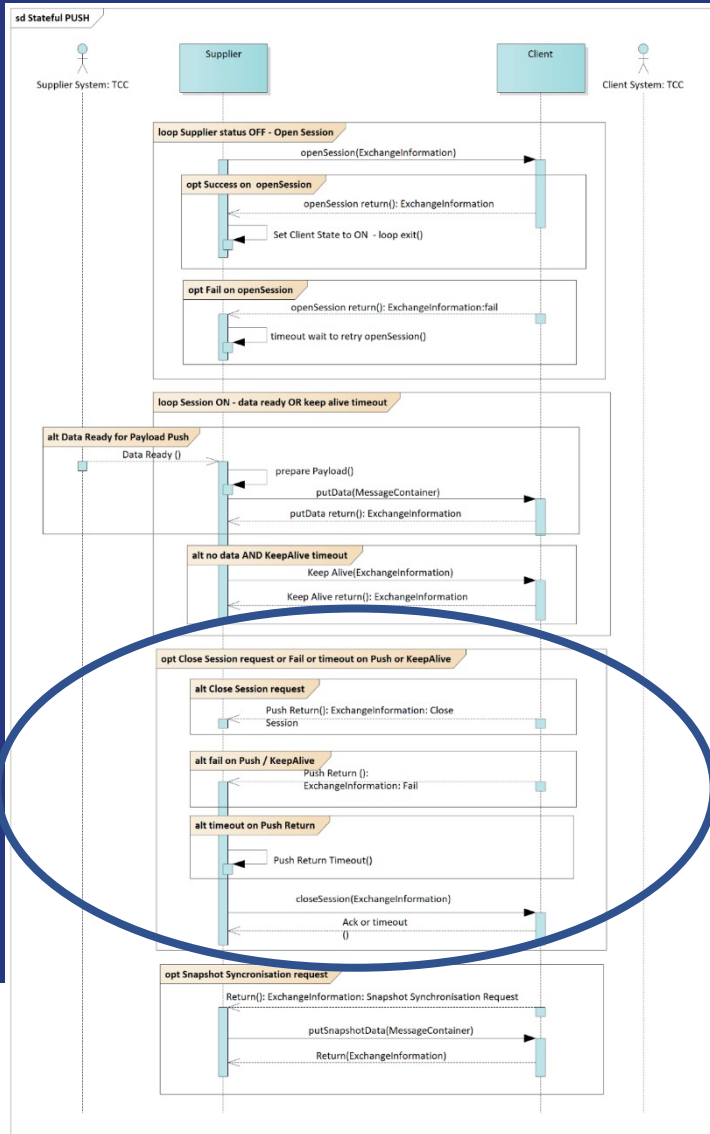


DATEX II

ndw

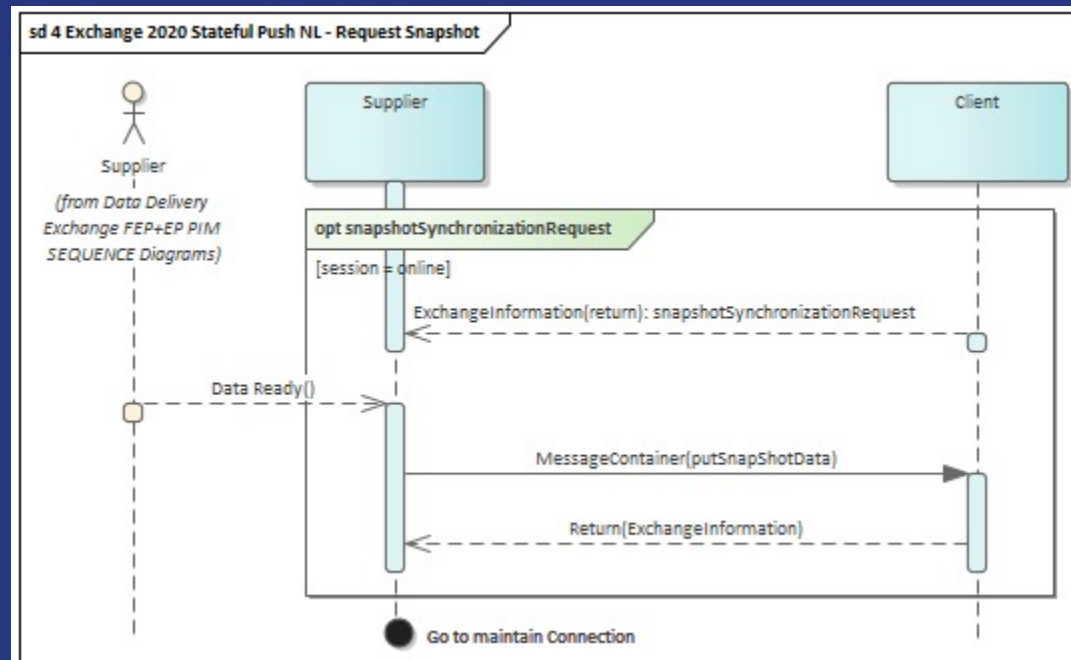
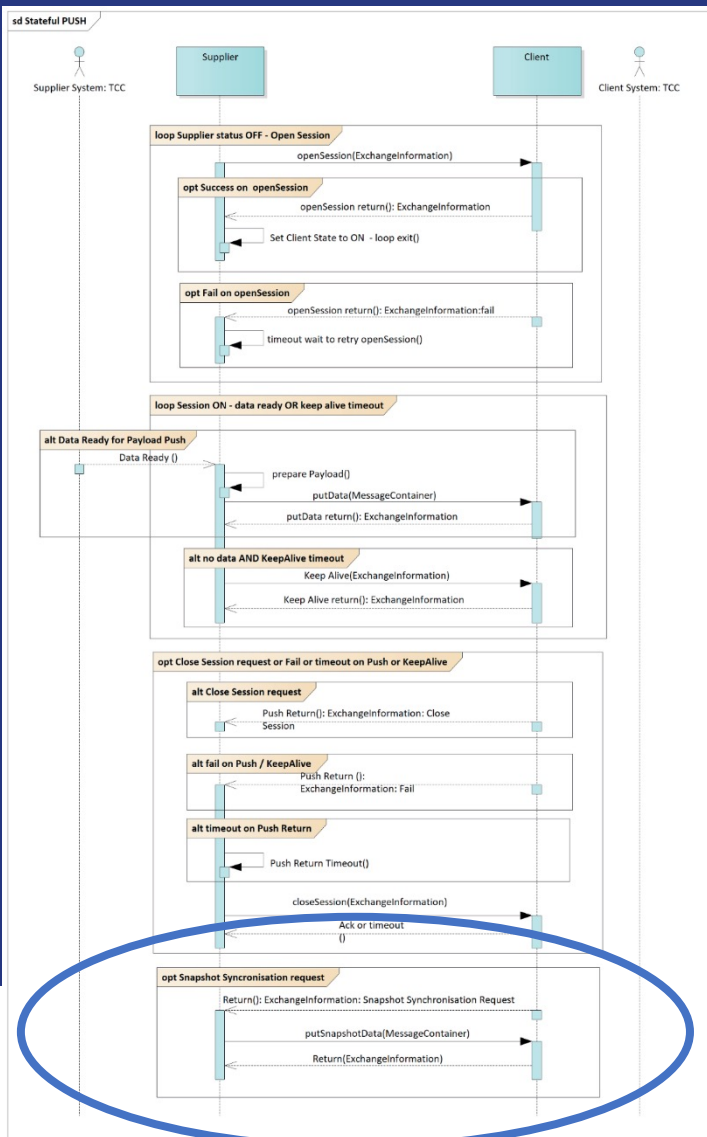


Close Session / Fail



DATEX II

Snapshot Request



DATEX II