

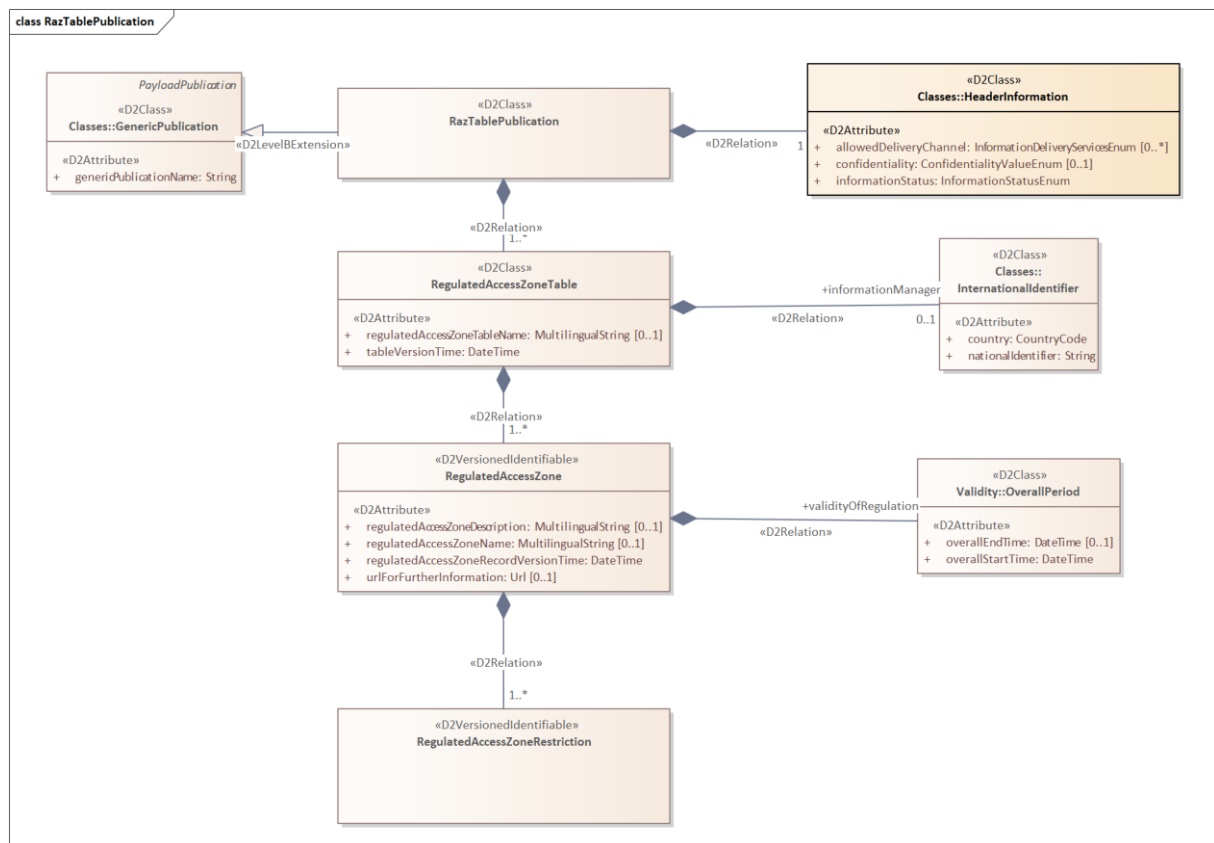
Regulated Access Zone Publications

Extension on DATEX II to express the restrictions on roadusage in zones/area's. These are usually applied as Low emission zone's, zone's with limited vehicle access (for trucks) and or for loading and unloading etc in pedestrian zones etc.

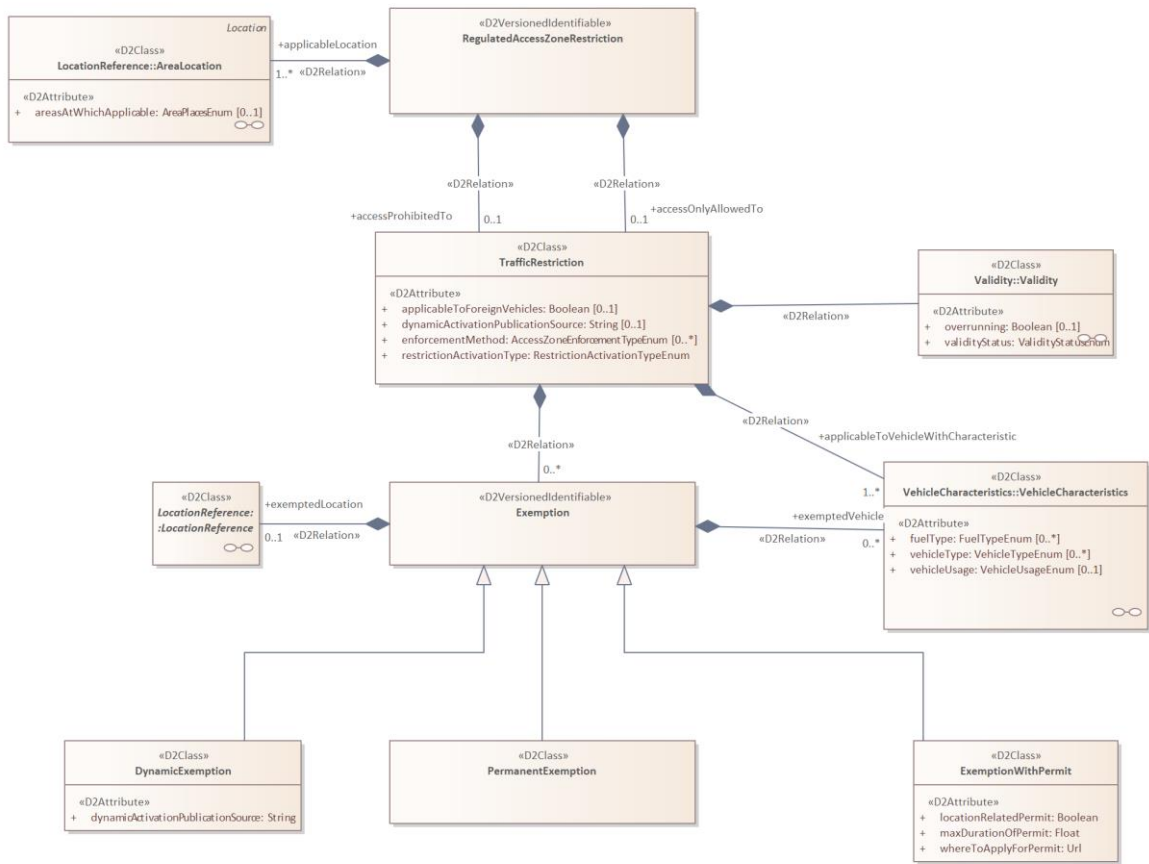
There are two interrelated publications: the RegulatedAccessZoneTable, containing the static characteristics of the zone. In some situations a dynamic element is part of the regulation (e.g. triggered by pollution or in case of events that require special opening of stretches of road) The fact that specific roads can be exemted or activated dynamically is in the Table. The actual activation is in another publication: RAZDynamicActivationPublication.

The structure of the publications is as follows:

RAZTablePublication



class RazTablePublication



Dynamic RAZ activation publication

