

On the fly VMS Messages setting among TCCs

CIS Practical Demonstration Objectives and Design

Matteo Buganini – Autostrade Tech



Goals

- CIS Exchange Framework presentation
 - Service Requester and Service Provider Exchange
 - Exchange of Information to be processed
 - Exchange of Processing directives and feedbacks
 - Not Predefined Simplified TMPlan Management
 - Tailored Message on specific VMS to be displayed
 - Request + Feedback

DATEX II

CIS and TMPlan Model on DATEX website

- Documentation available in DATEX Extensions Directory

<http://www.datex2.eu/content/datex-collaborative-its-services-and-traffic-management-plans-extension>

- CIS Use Case Description
- CIS and TMPlan Extension Directory for 2.3 version

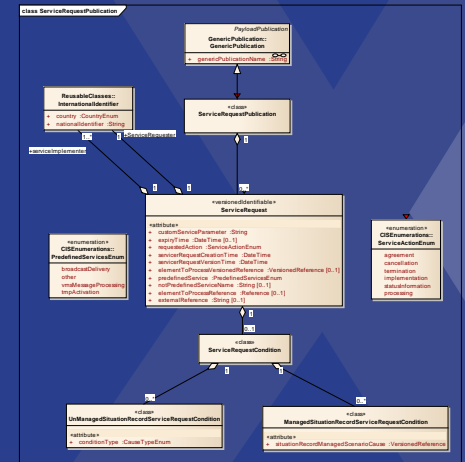
- **CISExtension package**

- CIS Request and Feedback Delivery
- CIS Workflow description

- **TMPlanExtension**

- TMP Workflow steps
 - TMPActivation Delivery
 - CIS Service Request and Feedback steps

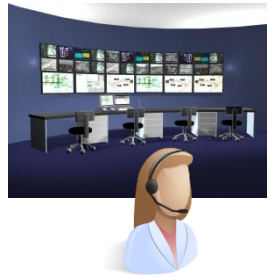
- CIS & TMPlan Extension Forum for discussions



DATEX II

DATEX II Plug & Play Supervisor and Road Management

Main goal: Exchange Information to Manage Road Operation



Monitoring

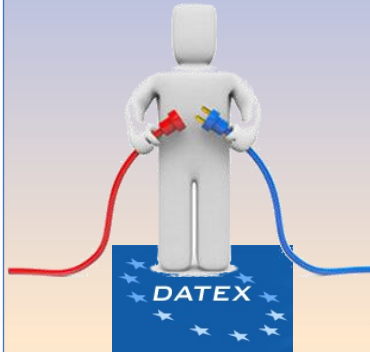
Decision

Operation



Legacy TCC
system

Centre to Centre
Communication by
DATEX



Monitoring

Decision

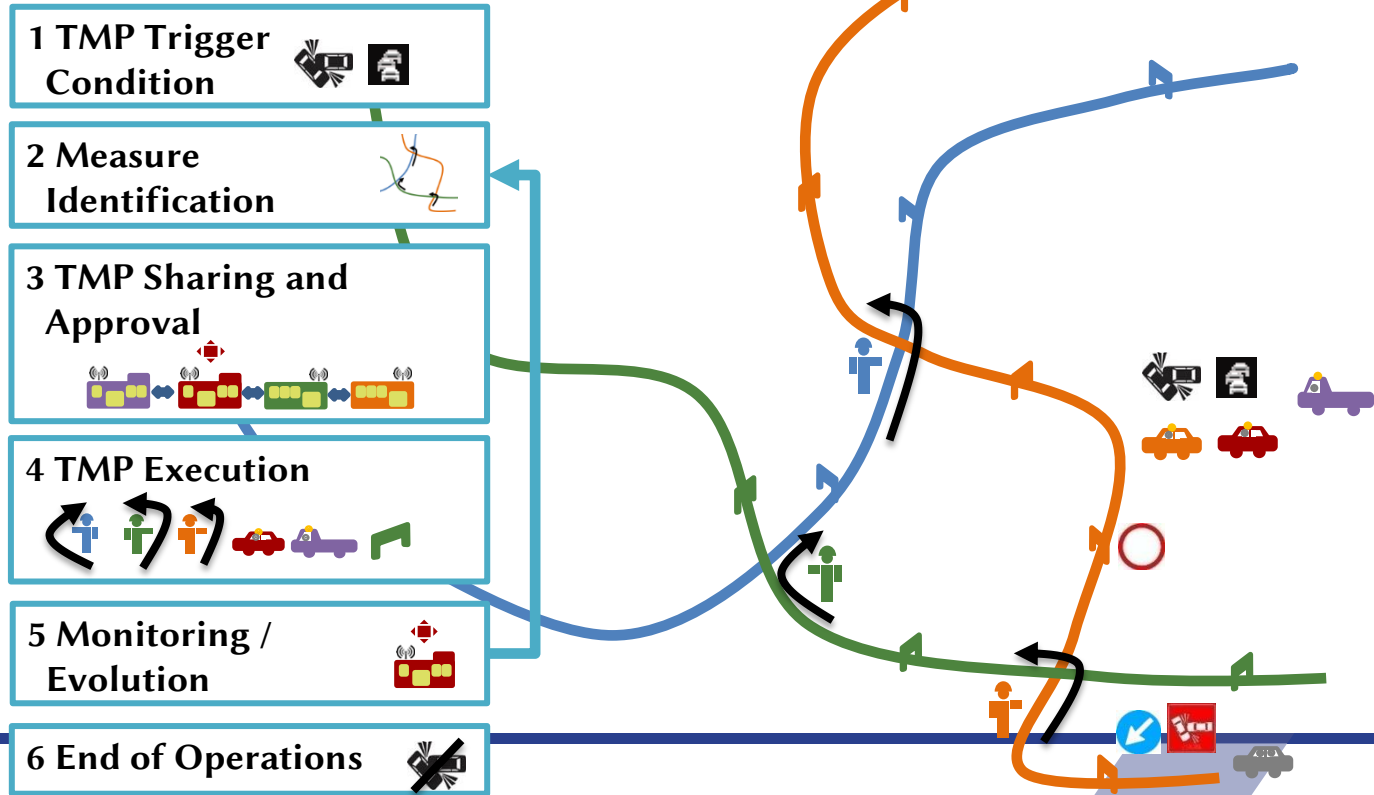
Operation



Legacy TCC
system



Operating TMPlans

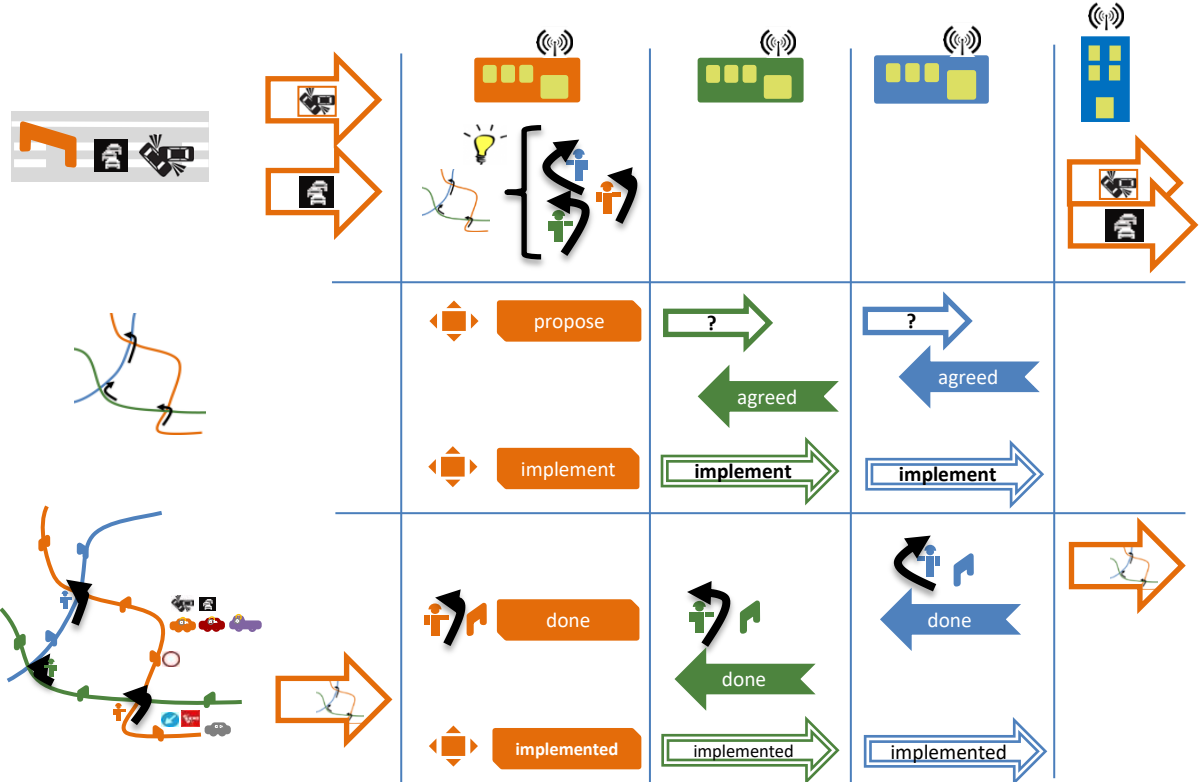


DATEX II TMPlan workflow management

Cohordinator
Node manage
Workflow

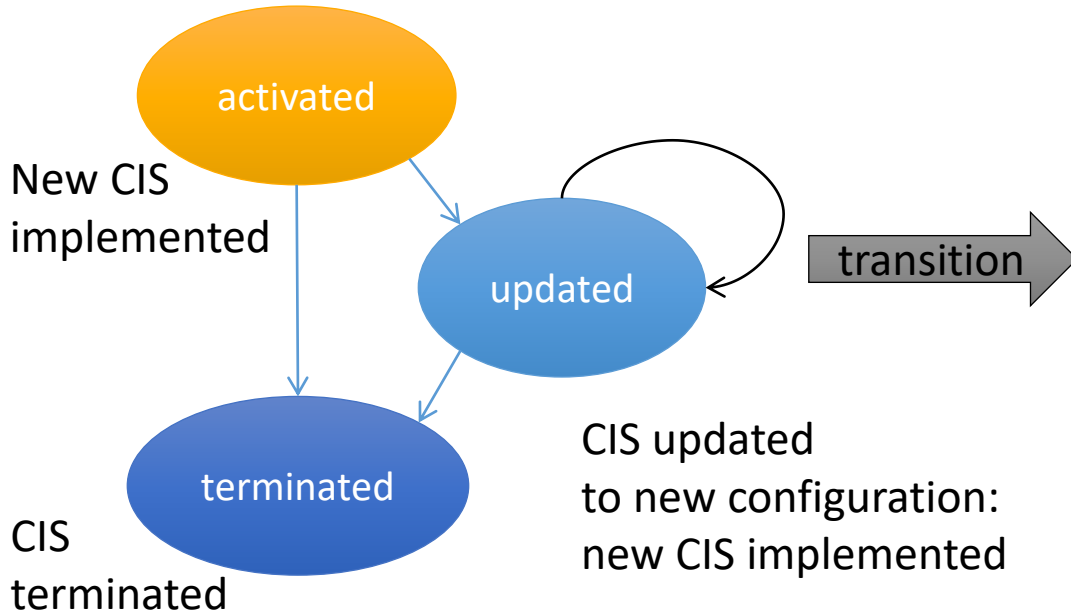


Recognise Scenario
and issue the First
Request

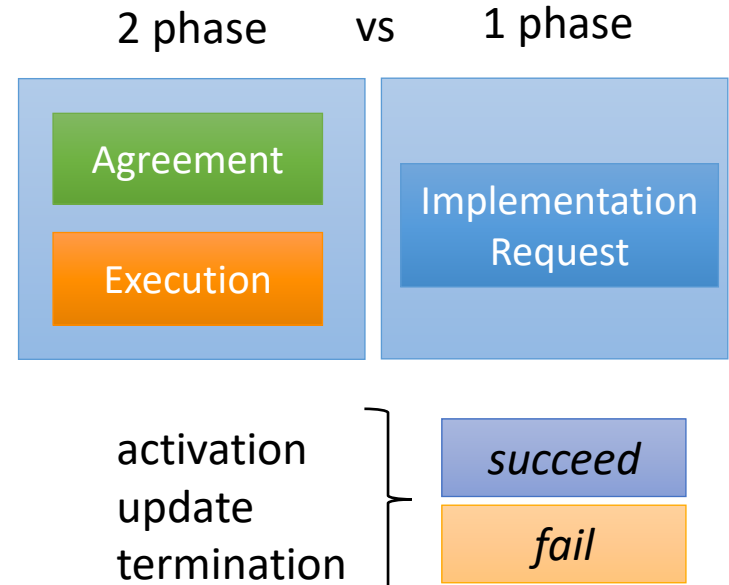


CIS Operating and Lifecycle

CIS Activation Phases



CIS Negotiation & Operation



On the fly VMS Messages setting among TCCs

- Simplified Not Predefined TMPlan Management
 - Tailored Message on specific VMS to be displayed
 - Implementation Request + Feedback

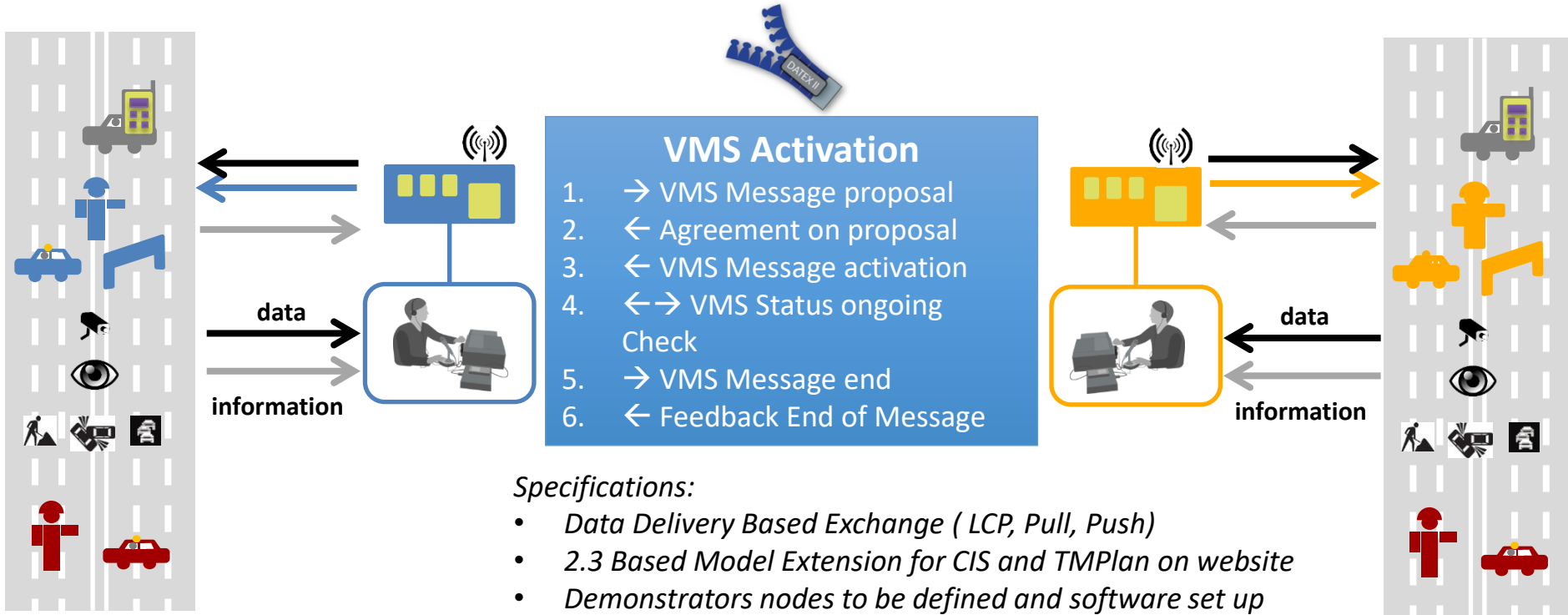
Usually for situations not managed by TCC systems

- Unpredictable situations
- Non motorway managed situation (urban, show, exhibition)



DATEX II

CIS VMS activation



Requirements List

	Requirement	implementation
A	Each TCC knows which VMS for displaying the messages and their format (text and pictos available)	Offline
B	Each TCC define messages to be displayed on VMS	TCC Software
C	CIS Exchange implemented by Data Delivery Exchange specs	LPC (Pull / Push)
D	Exchange of requested messages to be displayed to specific VMS	TMPlan (not predefined)
E	CIS Activation, Termination Request	Service Request
F	CIS Feedback	Feedback

DATEX II

Thanks ..



Fabrizio Paoletti - Matteo Buganini

Traffic Management Solutions - Engineering and Architecture

fpaoletti@autostrade.it

autostrade//Tech

DATEX TMG

www.autostradetech.it